



IECEx

ATEX

CE

RoHS

LM79

LM84

IP

66

Ta

55

Ta

-50



EX Mark: Ex d e IIC T3T4 Gb
Ex tb IIC T195°C/T130°C Db,IP66

Application

- Ideal to be used in the oilfield, chemical industry, offshore drilling platform, steel industry, petroleum etc.
- Gas explosive environment: Group IIA, IIB, IIC.
- Zone 1, zone 2; zone 21, zone 22.



Characteristics

- It is made using a special aluminum housing, all exposed fasteners and bracket adopt 304 stainless steel. Using high-tech anti-corrosion surface treatment technology, suitable for long-term highly corrosive environment of offshore oil platforms, oil drilling platform, chlor-alkali, vulcanization cyanide, etc.
- A full range of high conductivity material accelerate convection cooling structure, effective guarantee long-term use in high temperature environments.
- variety of light distribution, variety of installation types, an effective solution to beautify workshop and device platform.
- The shell is made of high-tech surface coating technology, corrosion resistant, waterproof and dust proof, suitable for harsh environments.
- Optoelectronic integrated technology · no dark spot, no ghosting, the average light efficiency of whole lamp can reach to 120 lm/W, energy-saving is 60% more than Metal Halide Lamp.
- Taiwan Meanwell driver or driver with same quality, power factor above 0.98, high reliability and long time service life.
- Independent wiring chamber, safe and easy installation and maintenance.
- Quick replay light source without welding.
- Intelligent control functions can be realized. (Dimming: 1-10VDC, PWM, Carrier, DALI, etc.)


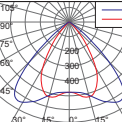
Main specification

Item	Technical Parameters
Input voltage range	100~240VAC
Rated frequency	50Hz / 60Hz
CRI (Ra)	70 (80 optional)
Life time (h)	100000
CCT	4000K(3000K/5000K optional)
cable entry	G3/4"、NPT3/4"
Leading-in cable diameter	φ 6mm~ φ 12mm
Terminals	Multi core: ≤4mm ²
	Single core: ≤6mm ²
Dimension	295×330×350mm
Net weight (kg)	7.5

Ordering reference

Ordering reference	Picture	Rated Wattage	Light output (lm)	Space height ratio	Mounting height	light distribution curve(1000cd/lm)	Equivalent to
							MH
BC9307S□-L100-60°×80°		100W	11800	1.25	8~12m		250W
BC9307S□-L120-60°×80°		120W	13600				>250W
BC9307S□-L150-60°×80°		150W	17300		400W		
BC9307S□-L200-60°×80°		200W	23300		>400W		
BC9307S□-L240-60°×80°		240W	26700		600W~800W		

Ordering reference

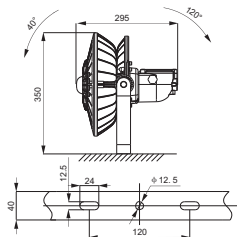
Ordering reference	Picture	Rated Wattage	Light output (lm)	Space height ratio	Mounting height	light distribution curve(1000cd/1m)	Equivalent to MH
BC9307S□-L100-90°×110°		100W	11000	1.75	8~12m		250W
BC9307S□-L120-90°×110°		120W	12600				>250W
BC9307S□-L150-90°×110°		150W	16000		400W		
BC9307S□-L200-90°×110°		200W	22000		>400W		
BC9307S□-L240-90°×110°		240W	25300		600W~800W		

Note 1: the above model with light for the recommended distribution, but also according to the actual need to choose other light distribution.

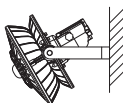
Note 2: order number □ according to the actual installation needs fill in 1 or 2, S1 straight stent, S2 angle bracket.

Drawing of dimension (Dimensions in mm)

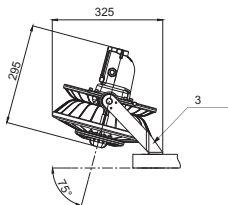
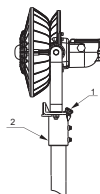
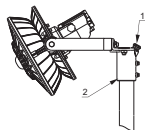
Seat mounting



Side wall mounting



Pole mounting



accessories ordering information(optional)

Ordering reference	Item no.	specification	quantity
P23	3	Inclined bracket	1

Ordering reference	Item no.	specification	quantity	note
P07	1	Water proof plug M20	1	φ8-φ12mm cable
	2	Vertical Mounting pole	1	φ40-φ50mm pole